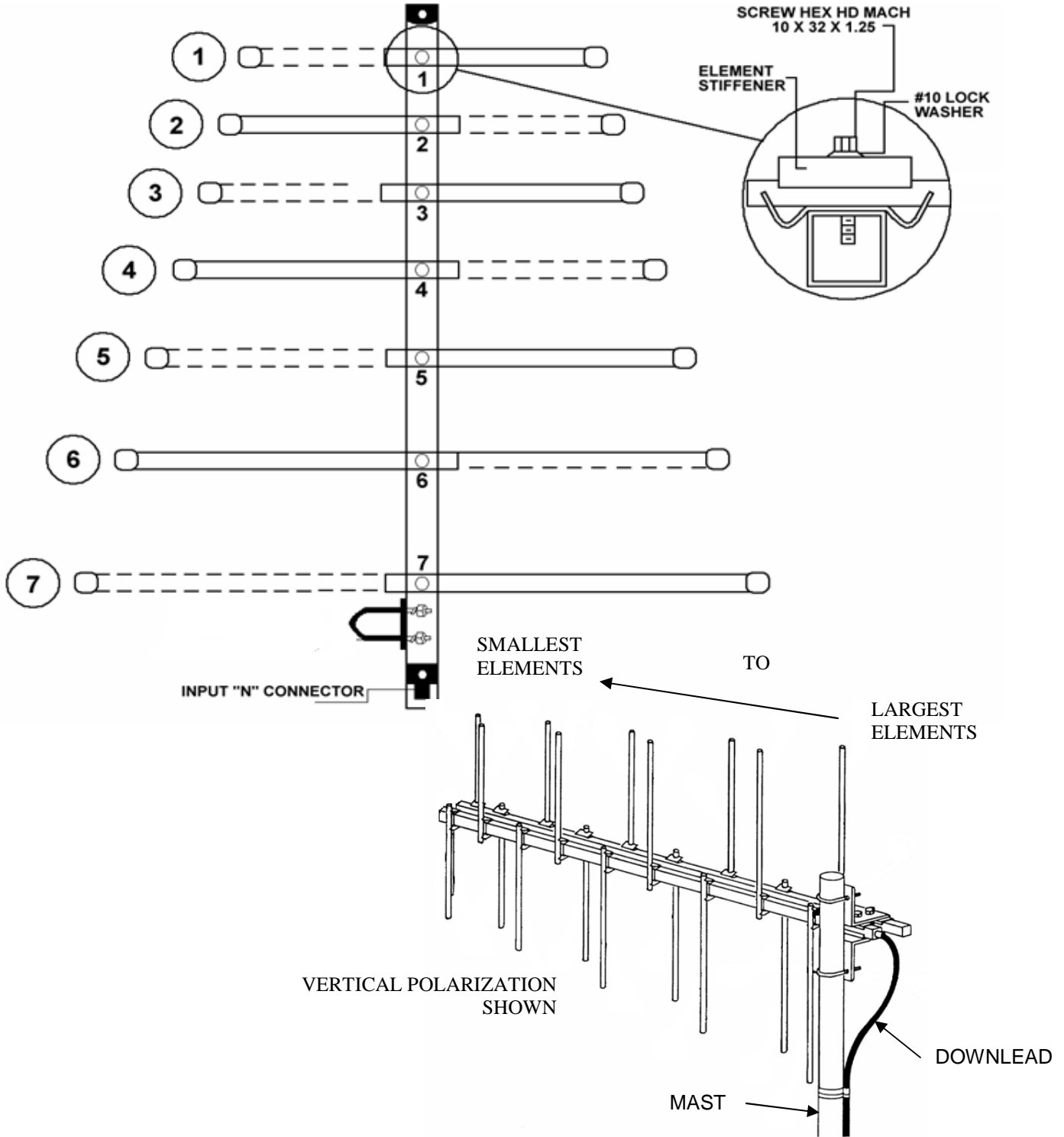


Model LPD-7 (190-250 MHz)

ELEMENTS SHOWN IN PHANTOM ARE ASSEMBLED TO LOWER CROSSARM

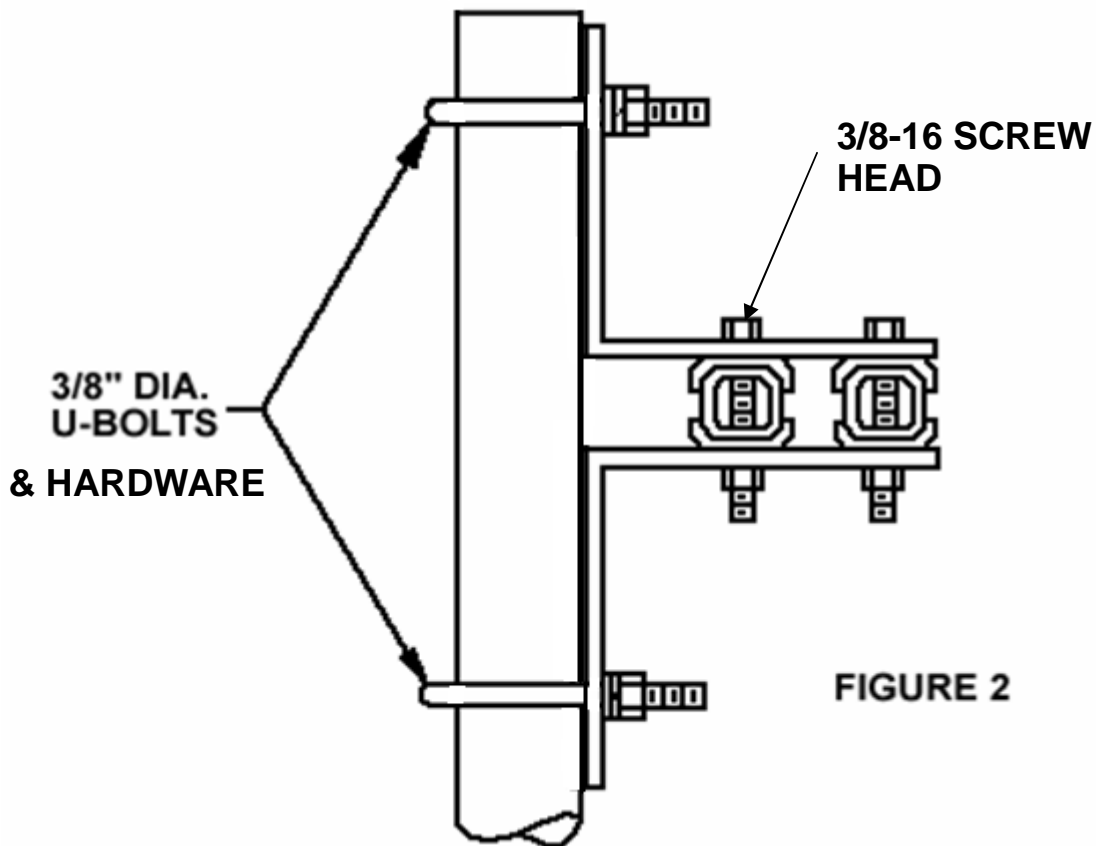


FASTEN EACH NUMBERED ELEMENT TO ITS CORRESPONDING NUMBERED LOCATION ON BOOM. SEE SKETCH AS TO PROPER METHOD.

Vertical Mounting Bracket Detail

Antenna Mounting

1. Loosely assemble the two 3/8" diameter U-bolts into the mounting clamps.
2. Slide the U-bolts over the end of the support mast, orient the antenna to the desired azimuth and tighten U-bolts securely.



Download.

1. RG-213/U cable is recommended for the download.
2. Assemble a UG-21B/U connector to the cable.
3. Thread the connector onto the antenna connector.
4. Loop the cable up and around to the support mast. Cable may either be routed down the outside of the mast or through the mast.

SAFETY PRECAUTIONS

To protect your antenna and receiver from lightning, you should ground your equipment.

1. To ground the antenna attach a ground wire under the head of the 3/8-16 x 3 1/4 in. long hex head screw at the mounting bracket (see Figure 2). Run the ground wire down the mast to a ground rod driven at least 4 feet into the ground.
2. Keep the antenna and cable a safe distance from any power lines.

Horizontal Mounting Bracket Detail

