

Screen-Reflector Yagi Antennas

126-138 MHz

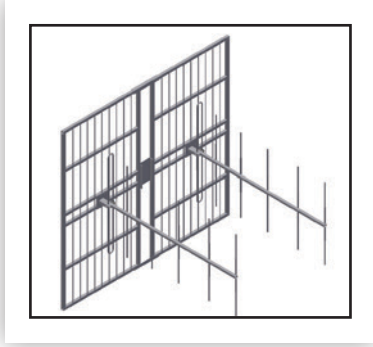
Description

SY42XR Series models are rugged, dependable antennas for point-to-point applications, equipped with a 50-Ohm, "N" type terminal. This series is designed for tower leg mounting and provides +/- 60 degrees of azimuth adjustment.

IMPORTANT: Model SY-M mounting kits for either up to 4 1/2" or up to 7 1/2" diameter tower legs must be ordered separately.

Features

- Exceptionally high gain and front-to-back ratios.
- Heavy duty, heliarc-welded aluminum construction.
- Direct input/output: no external baluns.
- Foam filled feed system for absolute moisture exclusion.
- Vertical or horizontal polarization.



SY42XR Series

Dual-yagi, grid-type reflector models covering 126-138 MHz.

SPECIFICATIONS

MODELS	SY42 XR-129	SY42 XR-135
FREQUENCY (MHz)	126-132	132-138
GAIN (dBi)	14.5	
VSWR (Max)	1.8 : 1	
HPBW (°) E-PLANE	52	
H-PLANE	40	
POWER (MAX, W)	1000	
REFL. DIMS. (IN)	86 x 80	
WEIGHT (NET LBS)	32	

TYPICAL WIND LOADING

MODEL	NET WEIGHT (LBS)	THRUST NO (ICE LBS.)	THRUST 1/2" (ICE LBS.)
SY42 XR-135	32	210	480

TACO Antenna's ongoing policy of continuing development may result in specification changes to its products.

TELEPHONE

United States: 866.975.4433
Canada: 519.756.7157
Europe: (+44)07765.583491
All Other Regions: 717.975.0885

TACO ANTENNA

(A division of Wade Antenna, Inc.)
29 Sharp Road, Brantford, Ontario
Canada N3T 5L8
www.tacoantenna.com

EMAIL

United States: sales@tacoantenna.com
Canada: cansales@tacoantenna.com
Europe: jbarton@tacoantenna.com
All Other Regions: sales@tacoantenna.com