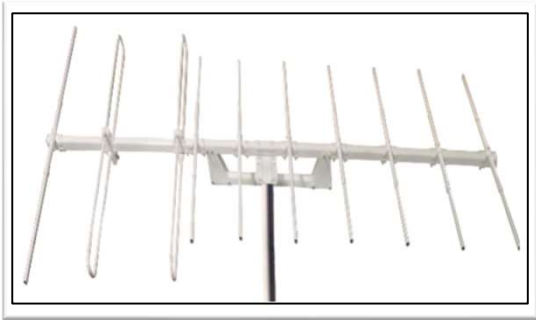


### CIVIL AVIATION YAGI ANTENNA

#### MODEL Y102B-130V

The Y102B-130V is a 118-137 MHz air traffic control 10 element Yagi antenna. The use of multiple driven elements allows our yagis to achieve high gain levels throughout their entire specified bandwidths. A single TACO Yagi's operational band typically covers a frequency range that would require as many as 3 standard Yagis.

Each unit is furnished with an integrated 50 Ohm N-Female connector, and includes a fiberglass mast fitted with coupling that center mounts to standard tower masts ranging from 1.66" to 2.875" OD.



#### ELECTRICAL

FREQUENCY RANGE - MHz	118-137	
GAIN - dBi	11.2	
IMPEDANCE - Ohm	50	
POLARIZATION	Vertical	
VSWR - ° (Max)	2:1	
HPBW - °	Horz	60
	Vertical	45
STD CONNECTOR	N	
MAX INPUT POWER - W	280	
OPERATING TEMP - °C (°F)	-50 to 100 (-58 to 212)	

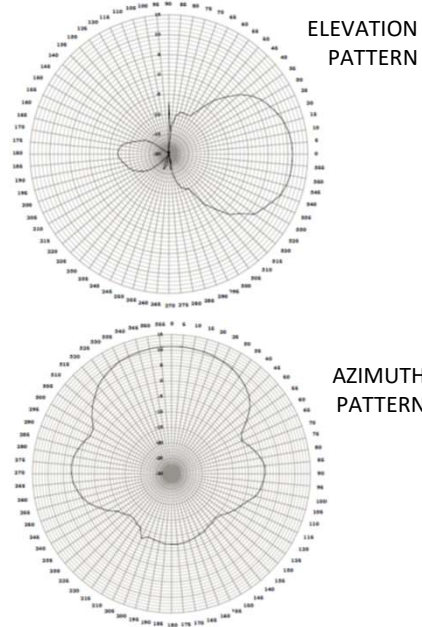
#### MECHANICAL

NUMBER OF ELEMENTS	10
OVERALL LENGTH - in (cm)	102.6 (260.6)
ANTENNA WEIGHT - lbs (kg)	22 (10.0)

#### MOUNTING

LENGTH & TYPE - in (cm)	52.6 (133.6) In Line Pipe Mount
FIBERGLASS MAST OD - in (cm)	1.66 to 2.875 (42 to 73)
AZIMUTH ADJUSTMENT - °	360

#### ANTENNA PATTERNS



#### WIND LOADING

WIND AREA - ft <sup>2</sup>	No Ice	2.9
	½" Radial Ice	5.25
WIND LOAD - ft-lbs	*No Ice	90
	**½" Radial Ice	52.5

\* Wind Speed = 100 MPH at sea level with 100% humidity at seventy degrees Fahrenheit

\*\* Wind Speed = 50 MPH at sea level with 100% humidity at zero degrees Fahrenheit

TACO Antenna's ongoing policy of continuing development may result in specification changes to its products.

### TACO ANTENNA

(A division of Wade Antenna Inc.)  
29 Sharp Road, Brantford, Ontario  
Canada N3T 5L8  
[www.tacoantenna.com](http://www.tacoantenna.com)

[www.tacoantenna.com/contact-us](http://www.tacoantenna.com/contact-us)