

QUICK SCREEN GROUND PLANE ASSEMBLY FOR HELICAL ANTENNAS

Instructions:

Prior to installation carefully read through the instructions and study all figures on how to assemble quick screen ground plane to the helical antenna.

The side view of helical antenna is shown in Figure 1, identifying some of the basic antenna components and the location of quick screen ground plane.

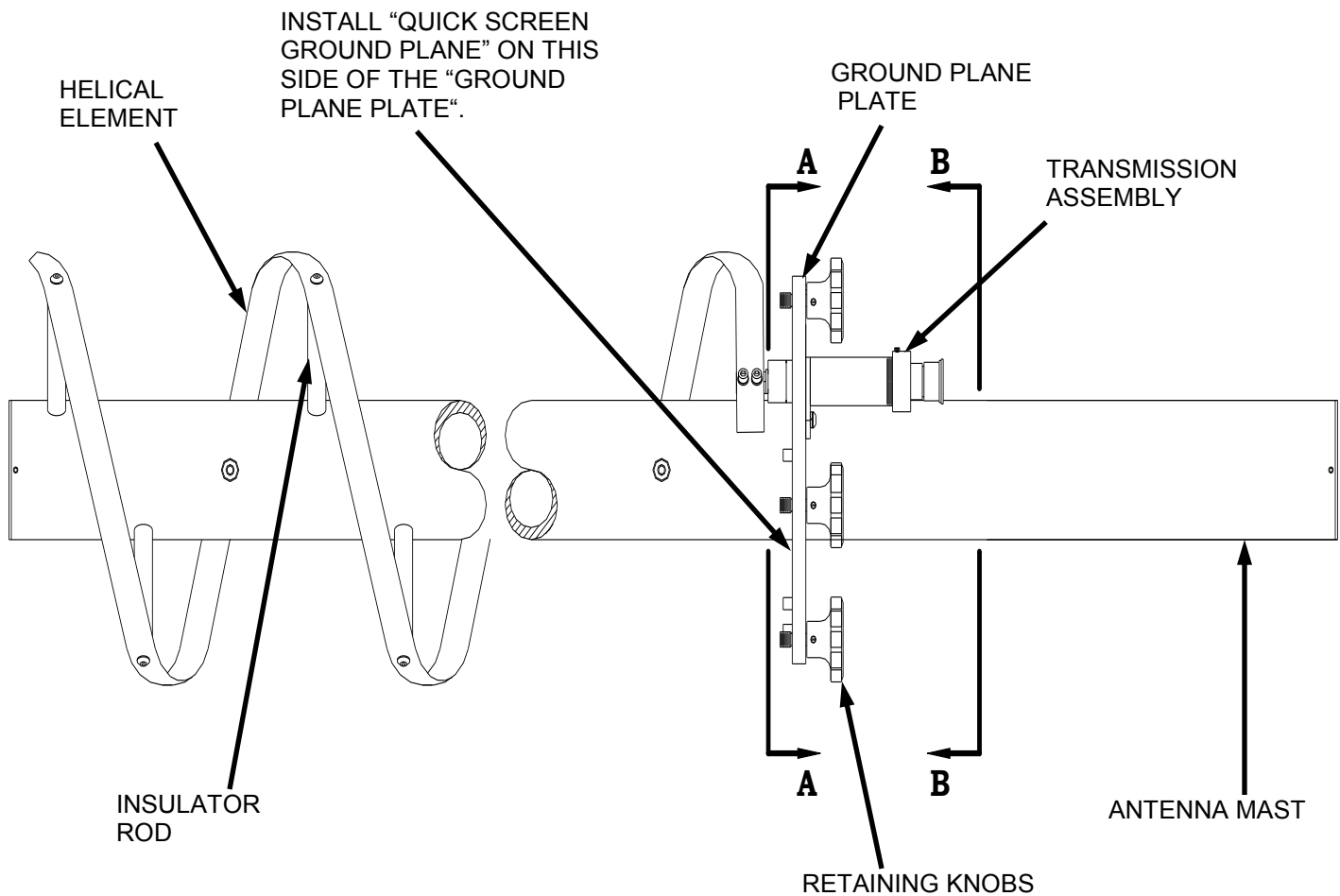
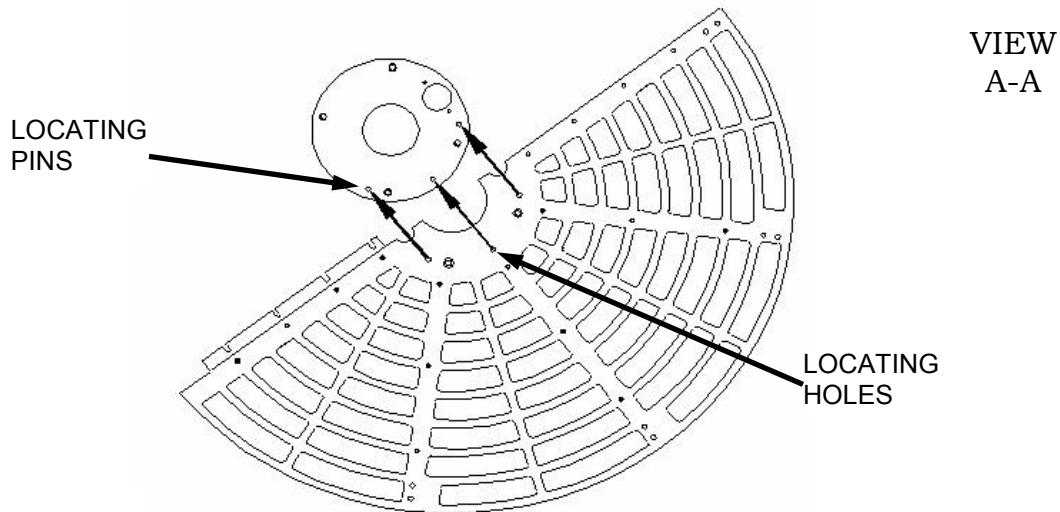


FIGURE 1

Prior to installing quick screen ground plane mount antenna to appropriate mast or tripod.

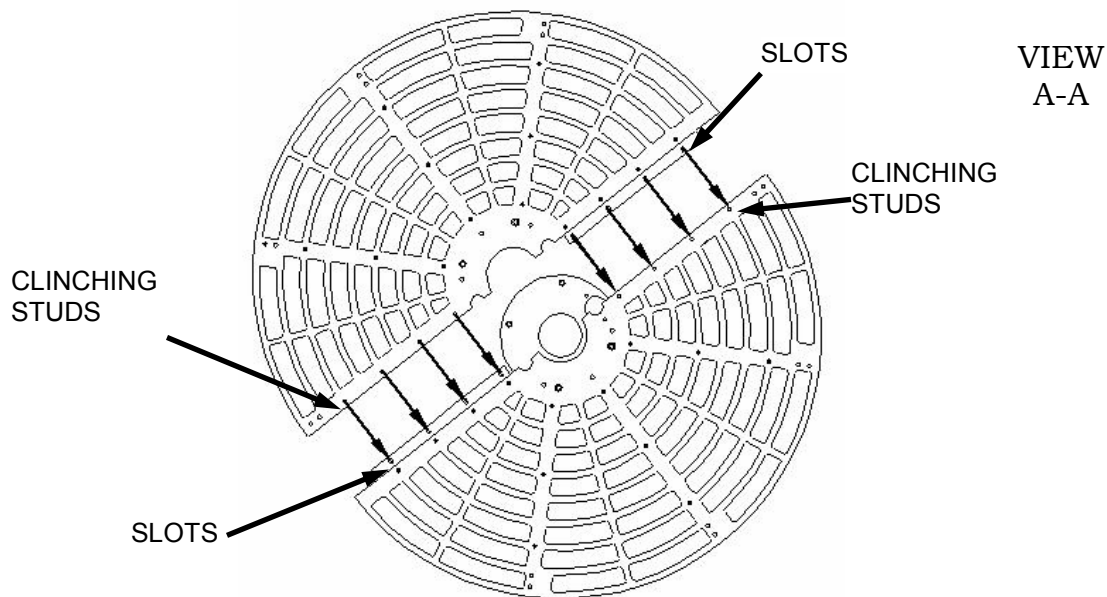
FIRST QUICK SCREEN GROUND PLANE HALF INSTALLATION

- Align locating holes to locating pins.
- Apply pressure to quick screen ground plane to snap in place.
- Once the quick screen is flush with ground plane plate, hand tighten retaining knobs (do not over tighten knobs).



SECOND QUICK SCREEN GROUND PLANE HALF INSTALLATION

- Align four clinching studs to four corresponding slots and slide the quick screen ground plane as far as it can go.
- Use retaining knobs to secure second quick screen ground plane in place.



DISPOSAL INFORMATION

TACO Antenna is committed to meeting all requirements of the WEEE directive (2012/19/EU). The WEEE directive requires that manufacturers of electrical and electronic equipment who sell into EU countries: (1) label their equipment to notify customers that it needs to be recycled, and (2) ensure that their products are appropriately disposed of or recycled at the end of their lifespan. For collection and return of TACO products, please contact your European TACO Antenna representative or distribution partner.

