

D8076 INSTALLATION INSTRUCTIONS

KEEP ANTENNA AND CABLES AT A SAFE DISTANCE FROM ANY POWER LINES.
TO PROTECT YOUR ANTENNA AND RECEIVER FROM LIGHTNING DAMAGE, ENSURE YOUR EQUIPMENT IS GROUNDED.

ANTENNA ASSEMBLY & MAST MOUNTING

1. Install 6 Clamping Bolts and Hex Nuts to the antenna base as per Fig. #1.
2. Pull the Down Leads up through the Mounting Mast and attach them to the antenna.
3. Weatherproof all connections appropriately.
4. If grounding your equipment, do so at this time following the Grounding Guideline below.
5. Slide the Antenna Base onto the 2.875" OD Mounting Mast (not included).
6. Tighten the Clamping Bolts while keeping antenna plumb and centered on the Mounting Mast.
7. Tighten the Hex Nuts against the antenna base.

ANTENNA GROUNDING GUIDELINE

1. Insert the Grounding Wire into the Grounding Lug and tighten Set Screw as shown in Fig. #2.
2. Connect the opposite end of the Grounding Wire to the ground of a device. If a grounding rod is used, the grounding rod should be at least four feet in the ground.

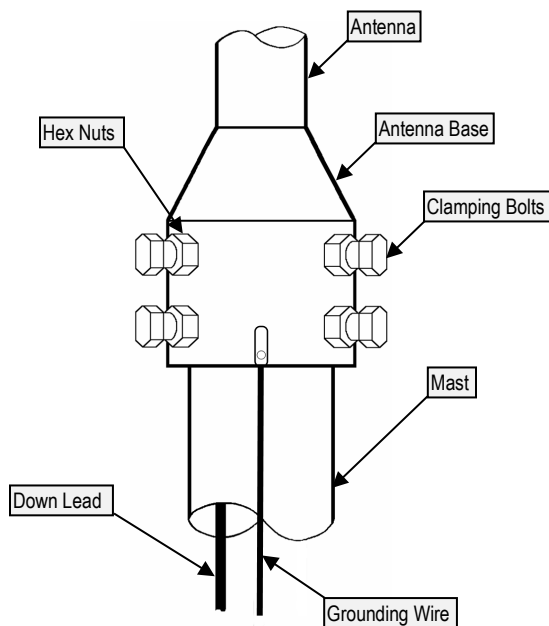


Figure 1 – Mounting Detail

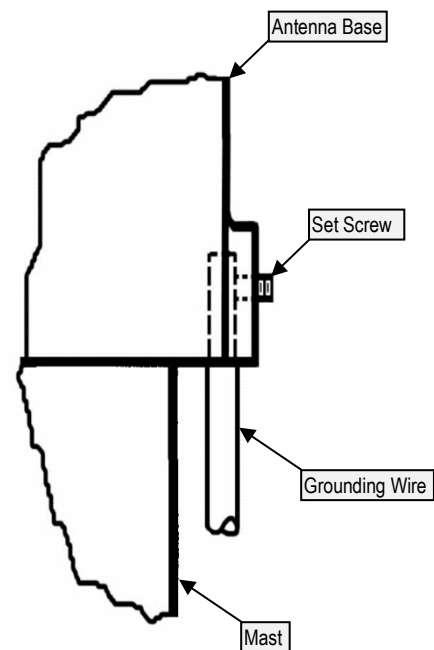


Figure 2 – Grounding Detail